

BEHR 

DYNASTY™

**EVERYTHING YOU
WANT IN A PAINT
NOW ALL IN ONE CAN**



BEHR 
DYNASTY
10-YEAR
COLOR FADE PROTECTION*
RAIN RESISTANT IN 60 MINUTES
LOW TEMPERATURE APPLICATION
FADE RESISTANT TECHNOLOGY
EXTERIOR SATIN
STAIN-BLOCKING PAINT & PRIMER
LIFETIME LIMITED WARRANTY**

BEHR 
DYNASTY
ADVANCED STAIN REPELLENCY
ONE-COAT HIDE GUARANTEED*
SCUFF & MAR RESISTANT
INTERIOR EGGSHELL ENAMEL
STAIN-BLOCKING PAINT & PRIMER

BEHR 
DYNASTY
10-YEAR
COLOR FADE PROTECTION*
RAIN RESISTANT IN 60 MINUTES
LOW TEMPERATURE APPLICATION
FADE RESISTANT TECHNOLOGY
EXTERIOR FLAT
STAIN-BLOCKING PAINT & PRIMER
LIFETIME LIMITED WARRANTY**

BEHR 
DYNASTY
ADVANCED STAIN REPELLENCY
ONE-COAT HIDE GUARANTEED*
SCUFF & MAR RESISTANT
INTERIOR SEMI-GLOSS ENAMEL
STAIN-BLOCKING PAINT & PRIMER

INTERIOR PAINTS



**OUR MOST DURABLE,
MOST STAIN REPELLENT,
MOST SCUFF RESISTANT,
ONE-COAT HIDE PAINT, EVER.**

BEHR DYNASTY® INTERIOR PAINT

MATTE | EGGSHELL | SATIN | SEMI-GLOSS



PRODUCT CERTIFIED
FOR LOW CHEMICAL
EMISSIONS:
UL.COM/GG
UL 2818

Advanced Stain Repellency

Blocks existing stains from showing through and minimizes penetration of new stains

Superior Scuff & Mar Resistance

Protects the painted surface from changes in appearance due to scuff, mar, and burnishing, making it ideal for high-traffic areas

One-Coat Hide*

Saves time and labor

Fast-Drying Technology

Reduces downtime between application and use, allowing quick return to service

Outstanding Early Block Resistance

Keeps painted surfaces from sticking together after 4 hours^Δ

Paint & Primer[◊] Formula

Removes the step of using a separate primer

MPI-Approved in All Sheens

Meets standard, high performance, and environmental requirements of commercial specifications

Antimicrobial-Mildew Resistant Paint Finish

Provides effective protection from mold and mildew of the dried paint film

Low VOC (< 50 g/L, excluding colorants)

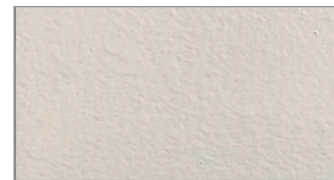
Meets the most stringent VOC regulations nationwide

* Guaranteed one-coat coverage excludes untinted bases and colors outside of the Exclusive BEHR DYNASTY® & MARQUEE® One-Coat Color Collection. Multiple coats are required in the following situations: 1) Painting over uncoated, porous, or repaired surfaces; 2) Over woods that contain tannins such as redwood or cedar; or 3) When painting over heavy stains, which may require spot priming, multiple coats and/or longer dry time.

^Δ Darker colors may require additional dry time. Longer dry time required in cooler temperatures and higher humidity.

[◊] A primer coat may be needed on some surfaces. Please refer to the Technical Data Sheet (TDS) for details.

STAIN REPELLENCY



BEHR DYNASTY® Interior Semi-Gloss Paint



NATIONAL BRAND Semi-Gloss

Photo of actual test panel shown above. Half of the panel is painted with BEHR DYNASTY® Interior untinted white base and the other half with a National Brand's untinted white base. The painted panel is allowed to dry according to both manufacturers' specifications. The panel is then partially submerged into a solution of water and blue dye for 5 minutes. Once removed, it is rinsed with fresh water and evaluated for stain repellency.

BEHR DYNASTY® Interior Paint rinses clean, repelling the stain, while the blue dye has penetrated the film of the National Brand.

EARLY BLOCK RESISTANCE



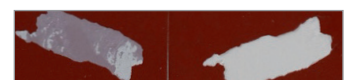
BEHR DYNASTY® Interior Semi-Gloss Paint
4 HOURS



NATIONAL BRAND Semi-Gloss
4 HOURS



BEHR DYNASTY® Interior Semi-Gloss Paint
24 HOURS



NATIONAL BRAND Semi-Gloss
24 HOURS

Photo of actual test panel shown above where paints tinted to a red color are applied to sealed test charts at three mils wet film thickness. After drying for four hours, the charts are cut into two pieces, placed face-to-face, and then compressed with a weight that exerts a pressure of weight of 1-kg load for 30 minutes. After 4 and 24 hours as indicated above, the face-to-face sections are pulled apart with slow and steady force to evaluate how the paint resists sticking together.

BEHR DYNASTY® Interior Paint pulls apart cleanly, while the National Brand sticks at both the 4-hour and 24-hour tests.

EXTERIOR PAINTS



OUR MOST ADVANCED EXTERIOR PAINT EVER, WITH 10-YEAR COLOR FADE PROTECTION.*

BEHR DYNASTY® EXTERIOR PAINT

FLAT | SATIN | SEMI-GLOSS



PRODUCT CERTIFIED FOR LOW CHEMICAL EMISSIONS:
UL.COM/GG
UL 2818

10-Year Color Fade Protection*

Unparalleled color fade protection keeps colors looking their best longer

Rain Resistant in 60 Minutes

Paint with peace of mind. Paint in the morning even when rain showers are expected in the afternoon

Early Block Resistance

Keeps painted surfaces from sticking together after 4 hours[^]

Low Temperature Application Down to 35°F

Extends the painting season

Paint & Primer Formula^o

Removes the step of using a separate primer

Antimicrobial-Mildew Resistant Paint Finish

Provides effective protection from mold and mildew of the dried paint film

* Valid only when tinted to colors from the BEHR DYNASTY® specially curated Exterior Color Fade Protection Palette. Based on predictive lab testing with a color shift less than Delta E of 5 as measured by CieLAB. A primer coat may be needed. Two coats of BEHR DYNASTY® Exterior Paint are recommended for optimal durability. Individual results may vary. See back label instructions for details and warranty limitations.

[^] Darker colors may require additional dry time. Longer dry time required in cooler temperatures and higher humidity.

^o A primer coat may be needed on some surfaces. Please refer to the Technical Data Sheet (TDS) for details.

COLOR FADE PROTECTION



BEHR DYNASTY® Exterior Paint protects from challenging weather conditions such as UV exposure from the sun, wind, rain, and snow.

Formulated with Fade Resistant Technology that helps prevent color fade for ten years when tinted to a color from the curated Exterior Color Fade Protection Palette. Available in 800 colors identified based on predictive lab testing with a color shift less than Delta E of 5 as measured by CieLAB.

See back label instructions for details and warranty limitations.

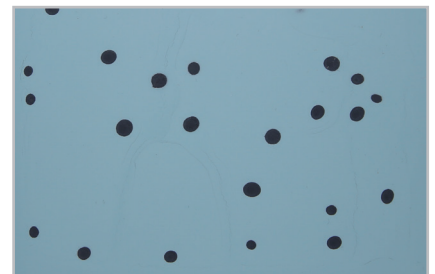
EARLY RAIN RESISTANCE



BEHR DYNASTY® Exterior Paint



NATIONAL BRAND A



NATIONAL BRAND B

Photos of actual test panels. Panels are painted with each manufacturer's tinted product. Similar colors from each manufacturer's respective color palette were selected and tinted with each manufacturer's colorant. Paints are applied under the same temperature conditions (60° F and 70% Relative Humidity) to test boards and allowed to dry for 60 minutes. Paint film is then exposed to an equal flow of water in a simulated rain test.

BEHR DYNASTY® Exterior Paint resists the rain while the competition does not.

COLOR & INSPIRATION



BEHR DYNASTY® Exterior Paint 10-Year Color Fade Protection* Palette

Even under challenging UV sun exposure, using colors from this palette means your paint job will maintain its luster so you won't have to worry about paint fading. With our unparalleled 10-Year Color Fade Protection, colors keep looking rich, vibrant and new.

Scan QR Code to see available colors.

*Valid only when tinted to colors from the BEHR DYNASTY® specially curated Exterior Color Fade Protection Palette. Based on predictive lab testing with a color shift less than Delta E of 5 as measured by CieLAB. A primer coat may be needed. Two coats of BEHR DYNASTY Exterior Paint are recommended for optimal durability. Individual results may vary. See back label instructions for details and warranty limitations.

CUSTOM COLOR MATCHING†

Have a specific color in mind? Bring your inspiration to The Home Depot® — a sample of the color that's about 1" x 1" in size: a paint chip from a surface, a piece of fabric, a competitor's paint swatch or even leftover paint — and we'll match it. The color you want is the color you'll get.



BEHR® COLOR STUDIO

Visit Behr's Color Studio [behrr.com/colorstudio](https://www.behr.com/colorstudio) where you will find inspiration, color tools, design advice, and other features to help you find the perfect color for your project.



† Custom colors do not qualify for the BEHR DYNASTY Interior One-Coat Hide Guarantee nor the BEHR DYNASTY Exterior 10-Year Color Fade Protection Palette.

GREENGUARD® CERTIFIED

Behr offers coatings that meet stringent GREENGUARD certification standards that help earn points toward LEED® certification. GREENGUARD certified products conform to GREENGUARD emission standards to help reduce indoor air pollution and the risk of chemical exposure.

GREENGUARD is a registered trademark of UL LLC. For more information, visit ul.com/gg. Certificates can be found on: spot.ul.com. See usgbc.org/LEED for details.



MPI-APPROVED

Behr has coatings that meet or exceed environmental and performance requirements established by Master Painters Institute® (MPI).

To learn more about MPI or view the most up-to-date MPI-approved BEHR Products, visit the MPI website at [paintinfo.com](https://www.paintinfo.com).

MPI is a registered trademark of Master Painters Institute®.



GREENGUARD and MPI trademarks and related logos are property of their respective owners and are used with permission.

Paint colors represented herein are approximations and are not exact matches. No guarantee is intended and approval for final color selections and color placement is the responsibility of the property owner, owner's representative or project manager. Testing your paint color on the surface is highly recommended.

COVER PHOTO:
○ House: NANO WHITE HDC-MD-06
● Accents: DARK ASH 7770F-5

For more information on our products and services, visit [behrrpro.com](https://www.behrpro.com).



© 2023 Behr Process Corporation
Santa Ana, CA 92705 U.S.A.

CP-BEHRPRO-DYNASTY-PRODUCT-LINE
Item No. 50010083
02/23

Exclusively at

